



Cabot
Learning
Federation

**CLF Health
and Safety
Policy
2025/2026**

Date Approved: June 2025
Approved By: CLF Board
Review Frequency: Annually
Date of Next Review: June 2026

History of most recent significant Policy changes

Date	Page	Change	Reason for Change
July 2019	Whole Document	Review of Policy	Cyclical review of Policy
July 2019	Policy Statement	Inclusion of Reference to CLEAPSS (specialist national guidance) for Science, DT, Art	Policy statement review
July 2019	Policy Statement	Inclusion of management procedures for use and storage of Radio-active materials.	Compliance with Ionising radiation regulations, and recommendation from radiation protection advisor to report back to the board.
July 2019	Policy Statement	Slight change in wording re John Cabot ventures.	To reflect lettings company responsibilities, overseen by corporate services and local works undertaken by Contract and academy site team.
July 2019	2.3 People and Wellbeing	Removed bullet point to be the forum to enable staff representatives and SLT of the academies to discuss higher level H&S issues	In practice this is undertaken in other forums e.g. Exec Team –JCC etc.
July 2019	Corporate services team	Reference to undertaking Due Diligence for new business opportunities	To undertake thorough Due Diligence checks on new proposed academies.
Sept 2020	Policy Statement	To include Covid 19	In response to management of global pandemic in line with Government guidance
Sept 2020	2.3 People and wellbeing	Additional Health and Safety Committee COVID	In response to the implementation and review of government guidance to ensure COVID secure workplaces.
June 2021	Policy Statement	Additional bullet point to reflect robust procedures centred around the introduction of hybrid working	Change to working practice
June 2022	Policy Statement	Further comment to demonstrate the same level of training, information and supervision is provided to individuals with language or disability needs	As part of the EIA
June 2022	Policy Statement	Specific Covid 19 guidance has been replaced with general guidance around the management of infectious diseases	In response to government guidance

June 2022	Role and Responsibilities	Standing down of the Covid 19 sub-committee	In response to the easing of Covid restrictions
June 2023	Policy Statement	Removal of reference to any future European Union legislation	The Retained EU Law (Revocation and Reform) Bill had its second reading in the Commons on 25 October 2022 and will catch the full range of health and safety regulations, which will automatically be repealed on 31 December 2023 unless ministers make specific decisions to save them.
June 2023	Policy statement	Addition of the word foreseeable	In the context of managing risk
June 2023	Policy Statement	Removed reference to spotty booklet (withdrawn) and replaced with UKHSA document	
June 2023	Policy Statement	Changed details of our Registered Radiation Protection Advisor	
June 2023	Organisational structure	Changed to reflect recent changes	
June 2023	Roles and Responsibilities	Changed to reflect change of structure/titles	
June 2023	Employee Duties	Inclusion of Near miss reporting	Raise profile
June 2023	Contracts	Change of M&E contractor	
June 24	Policy Statement	Further comment on specific training for staff working in secondary DT department	
June 24	Policy Statement	Additional point to demonstrate the level of first aid and mental first cover is being managed.	Minor changes to the First Aid at Work Regulations which emphasise employers' responsibilities to take account of employees' mental health in their first-aid needs assessment
June 24	Contracts	Change of external Fire Risk Assessor	
June 25	Policy Statement	A list has been added of specific UK Health and Safety Legislation	Recommendation from Internal audit
June 25	Policy Statement	Some wording has been removed to make the statement to be more concise	

Contents

History of most recent significant Policy changes	2
Contents.....	4
1 Health & Safety Policy Statement.....	5
2 Equalities Impact Assessment	7
3 Organisation Structure	8
4 Roles and Responsibilities	8
5 Trades Union Representative	13
6 Competent Health and Safety Advice.....	13
7 Contracts.....	13

1 Health & Safety Policy Statement

It is the policy of Cabot Learning Federation (CLF) to conduct its operations in such a manner as to ensure the health, safety, and welfare of all its employees, contractors, clients, students, general public and others whilst working and studying on its premises and outside those premises on associated activities. Working to the Health & Safety at Work etc. Act 1974 and UK Statutory Instruments, as well as any future national health and safety legislation including

- [Workplace \(Health, Safety and Welfare\) Regulations 1992](#)
- [The Management of Health and Safety at Work Regulations 1999](#)
- [The Control of Substances Hazardous to Health Regulations 2002](#)
- [The Reporting of Injuries, Diseases and Dangerous Occurrences Regulations \(RIDDOR\) 2013,](#)
- [The Health and Safety \(Display Screen Equipment\) Regulations 1992](#)
- [The Gas Safety \(Installation and Use\) Regulations 1998](#)
- [The Regulatory Reform \(Fire Safety\) Order 2005](#)
- [The Work at Height Regulations 2005](#)
- [Control of Asbestos Regulations 2012](#)
- [The Ionising Radiations Regulations 2017](#)

We will achieve this by:

- Creating and encouraging a positive and pro-active health and safety culture across the organisation.
- Identifying all foreseeable risks that may cause injury or harm to staff, pupils and visitors and identifying all control measures that are reasonably practicable are in place to avoid injury or harm. Ensuring that these risks and control measures are captured in risk assessments that are conducted and reviewed on a regular basis in accordance with CLF Risk Assessment process.
- Providing safe access and egress to the premises at all times.
- Ensuring that staff receive appropriate, applicable, and up to date training, information, instruction, and supervision, this will be made accessible for all staff including individuals with language or disability needs.
- Ensuring arrangements are in place to provide safe use of, handling of, storage of and transportation of all articles and substances.
- Ensuring that suitable and sufficient work equipment is available and maintained, and that the appropriate personal protective equipment is provided for use of such equipment as required. Providing access to adequate welfare facilities which include, but are not limited to, toilets, an adequately warm environment, staff room, and drinking water
- Ensuring so far as is reasonably practical, that all CLF premises provide a healthy and safe working environment (including hybrid working), and that there are safe systems of work in place to provide this.



- Ensuring all staff who are defined as DSE users (including hybrid working) are based at a suitable workstation Ensuring any outbreak of infectious diseases is managed by following the advice published in *Infectious disease in education and childcare settings*, plus additional advice provided by UKHSA.
- Ensuring that the safety standards prescribed are adhered to both on CLF premises and for offsite activities.
- Ensuring that when staff operate on behalf of CLF an assessment of the significant risks specific to the activities or tasks will be made. All reasonably practicable measures will be put in place to manage those risks and ensure the activities, or tasks can be conducted in a safe manner.
- Ensuring that all Secondary academies access, reference and follow the specialist advice and guidance provided by CLEAPSS. Ensuring staff working in a secondary Design and Technology departments, including those in food technology, have obtained the necessary training certified by the Design and Technology Association (DATA)
- Ensure there are robust management procedures embedded for the use and storage of radioactive materials used in science. CLF are registered with the Health and Safety Executive for Secondary academies to hold small amounts of radioactive materials used in science. To hold these and be compliant with the Ionising radiation regs 2017, to ensure each academy has a trained RPS-Radiation Protection Supervisor (Trained every 5 years) and that CLF appoint an Independent RPA-Radiation protection Adviser (contracted via– Tony Butterworth University of Bristol Radiation Protection Adviser (RPA2000 Certificate No. 00001838).
- Monitoring compliance and good practice of health and safety, and where issues arise appropriate consultation and action is taken.
- Ensuring that all third-party contracts and services awarded across the CLF, be that centrally or by individual establishments, have a consistency of approach and thorough vetting of the contracts to achieve legal compliance. To then ensure that all contracts let are monitored for compliance.
- Regularly updating the Risk Registers, both at CLF and academy level, to ensure they are working documents that continually highlight and mitigate as far as is reasonably practicable identified risks.
-
- Ensuring an adequate number of staff are trained in both first aid and mental health first aid, along with providing resources to support individuals requiring first aid treatment, including an Automated External Defibrillator (AED)
- Ensuring good and clear communications and consultation with/to all parties, including safety representatives of the recognised teacher unions, on all information related to health and safety and the management requirements of this, to comply with Safety Representatives and Safety Committees Regulations 1977.

Whilst the day-to-day management of health and safety can be delegated to the academies, the ultimate and overall responsibility for ensuring a safe and healthy environment lies with the CLF Board.

Specific Health and Safety Policies of each CLF academy or school must integrate into this CLF Health and Safety Policy.

John Cabot Ventures Ltd and City Academy Trading Ltd will come under the CLF Health and Safety Policy and operational issues will be dealt with under CLF Policy via contract management procedures and Local Academy policy.

The CLF Board, Sub-committees, Executive Team, Principals and Senior Leadership Teams, Academy Councils, CLF staff, volunteers, and employees of associated or subsidiary companies must familiarise themselves with the contents of this statement, the organisational structure and arrangements.

Employees have a legal duty to act in a safe manner and not to endanger themselves or others by their actions. Staff are encouraged to be proactive in developing and maintaining a healthy and safe working environment and to report health and safety concerns to the appropriate line management, or through the appropriate reporting procedures.

The CLF Board recognises a positive health and safety culture is of significant benefit to the good performance and safety of the whole organisation. We aim to encourage, support and develop a positive and proactive approach for students through risk education and awareness. The organisational structure named below will ensure that sufficient resources (including financial) are available so that the Policy and its arrangements can be implemented effectively.

This Policy and our health and safety standards will be under continual review in the interests of continuous improvement. Formal amendment to this Policy will be conducted annually or as necessary to reflect changes in the academies strategy, UK or EU law and any changes will be brought to the attention of all staff.



Steve Taylor, Chief Executive Officer, Cabot Learning Federation

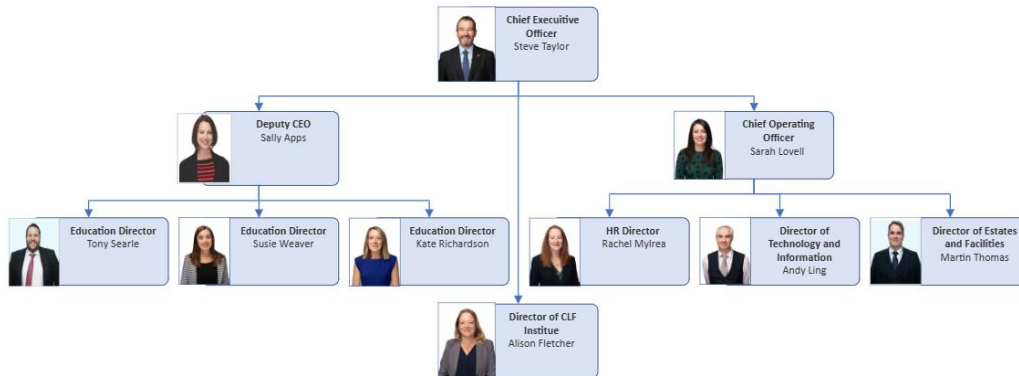


Yvonne Beach, Chair of the Cabot Learning Federation Trust

2 Equalities Impact Assessment

An Equalities Impact Assessment has been carried out. The assessment concluded that there was no adverse impact identified for any groups of people with protected characteristics. The full Equalities Impact Assessment Report can be obtained from James Lewington

3 Organisation Structure



Cabot Learning Federation recognises the need to identify organisational methods for implementing and managing the health and safety of all persons who work within CLF, each associated or subsidiary company, each CLF academy and anyone who visits their premises.

CLF understands the Health and Safety at Work etc. Act 1974 places ultimate and overall responsibility for health and safety with the CLF Board of Directors. This Policy directly relates to the CLF Board of Directors as a corporate body, the Audit Committee, People & Wellbeing Executive Group, Executive Team, and Central Services Team. The following is an outline of duties and responsibilities that have been assigned to these specific groups.

4 Roles and Responsibilities

4.1 CLF Board of Directors

The Board of Directors, as a corporate body, has the responsibility to set the strategic direction and objectives of all health and safety matters across the CLF. The board is responsible for ensuring that high standards of corporate governance are maintained. It exercises its powers and functions by addressing such matters as policy and strategic development, adopting an annual plan and budget, monitoring the CLF safety management systems, managing the corporate risk register, and making strategic decisions about the direction of the CLF. The overall aim is to ensure a positive health and safety culture is established and maintained throughout.

The Board must ensure that all reasonable steps have been taken to reduce the possibility of accident or injury to staff, students, and visitors. CLF Sub-committees, the Executive Team, Principals and Senior leadership teams, Academy Councils and any relevant Project Steering Group will keep the Board informed of all developments relating to health and safety matters and will include such matters in a health and safety report.

The CLF Board of Directors responsibilities are:

- To ensure that each Board Member accepts their individual role in providing health and safety leadership for the CLF.
- To ensure the Board formally and publicly accepts its collective role and responsibility in providing health and safety leadership for the CLF.
- To ensure the Board's decisions reflect its health and safety intentions as articulated in the CLF health and safety Policy statement.
- Ensuring an overall CLF health and safety strategic development plan, including key targets, is implemented, and undertaken with engagement from all members of the Executive Team.
- To receive regular and thorough updates in relation to the strategic development plan and associated actions.
- To warrant that all external and third-party contracts that are awarded across the CLF have a consistency of approach, the required levels of competence and ensure legal compliance. Any successful contracts awarded by the CLF must have been appropriately vetted for health and safety, financial and equality standards and other measures deemed appropriate.
- To ensure every academy has an Academy Council established in accordance with the CLF Articles of Association. To ensure the Academy Council is chaired by a member nominated by the Board.
- To ensure that each academy has an operational Health and Safety committee.
- To provide and ensure an informed, proportionate, and prioritised risk management system for the CLF is implemented and monitored, in order to assess the risks to pupils, staff and others affected by school activities in order to identify and introduce the health and safety measures necessary to manage the risks, this will include any reasonable adjustments to be considered to allow staff and pupil to work safely.
- To ensure annual health and safety targets and initiatives are recorded and published across the CLF.
- To ensure effective accident and near miss reporting and investigation procedures are in place across the CLF.
- To ensure monitoring of compliance contracts throughout the CLF is undertaken and suitable reports are provided to the Executive Groups e.g., mechanical, and electrical statutory inspections, fire risk assessments, asbestos surveys, water hygiene monitoring. This includes those academies under the BSF scheme.
- To ensure there is an effective business continuity plan in place for each CLF premises.
- To ensure there is an emergency plan along with emergency procedures in place for the safe evacuation of all CLF premises.
- To confirm that there have been no instances of material irregularity, impropriety, lack of integrity or negligence of health and safety statutory instruments across the CLF and associated or subsidiary companies.

- To review the CLF health & safety annual report.

4.2 Audit Committee

The Audit Committee must:

- Review the CLF risk management practices and procedures and ensure appropriate action plans are in place.
- Ensure progress of internal and external audits.

4.3 People & Wellbeing Executive Group

The People and Wellbeing Group are responsible for health and safety and must:

- Receive a progress report on individual academy findings, issues, and progress to date from CLF Head of Health and Safety.
- Implement spot checks on a specific target area for consistency of approach and compliance.
- Ensure there are effective and adequate formal internal and external communications on health and safety across the CLF.
- Ensure the CLF health and safety strategic development plan is implemented.
- Ensure there are systems in place to gather data, record and publish annual health and safety targets and initiatives across the CLF.
- Ensure suitable and sufficient monitoring, reviews and recommendations of all health and safety management systems across the CLF is warranted and implemented.
- Ensure contingency emergency arrangements and business continuity plans are in place to enable CLF strategic and education operations to continue in line with statutory requirements.

4.4 Executive Team

The Executive Team must support the implementation of health and safety across the CLF by:

- Implementing and reviewing policies.
- Considering the impact of health and safety in all strategic and operational decision making.
- Implementing ways in reducing the likelihood of people being harmed by CLF activities.
- Appraising findings and appropriate actions from health and safety audits, compliance audits, inspection audits, Reporting of Injuries Disease and Dangerous Occurrences (RIDDOR) reports.
- Ensuring systems are in place and adhered to minimise the likelihood of enforcement action, penalties and prosecutions.

- Working alongside Principals to manage and monitor an informed, proportionate, and prioritised risk management system for the CLF, ensuring that all risk assessments are completed and reviewed in accordance with CLF Risk Assessment processes.
- Ensuring there is an emergency plan with procedures for the safe evacuation of a CLF premises.
- Be the point of contact for feedback and progression for the academies and academy health and safety Committees should any issues arise.
- Provide two-way feedback in monitoring and review of operational health and safety issues, and feedback from and to the academy health and safety committee.
- Monitoring the structure, attendance, schedule and agenda of the academy health and safety committee.

4.5 The Director of Estates and facilities

The Health and Safety and Estates Teams, working with the Director of Facilities and Estates must:

- Manage the Risk Management process across the CLF.
- Update and recommend for approval the CLF Health and Safety Policy and produce an academy level Policy for adoption by academies.
- Produce an annual health and safety strategic development plan.
- Provide expert advice and guidance to CLF staff regarding health and safety issues.
- Ensure arrangements are made for audits and other visits to take place in each academy.
- Review audit reports and ensure academies take sufficient action to ensure improvement.
- Review the status of health and safety across the CLF ensuring appropriate action is taken where areas of weakness or concern are identified.
- Undertake and feed into the Due Diligence process for new business opportunities.
- Lead the development and delivery of effective and robust health and safety processes and services across the CLF, including Risk Assessment processes.
- Support action as required following any health and safety incident.
- Implement an effective accident reporting and investigation procedure across the CLF.
- Ensure all relevant internal and external stakeholders are involved/participate in key health and safety activities and processes to ensure the development of robust and appropriate systems.
- Maintain the central health and safety records and use them to inform the audit programme.
- Arrange statutory training in health and safety matters.

- Create and publish health and safety related communications through news items to support the knowledge and skills of staff with health and safety responsibilities across the organisation.
- Engage specialist advisors when required and work with them on specialist activities such as asbestos, fire risk assessments etc.
- Oversee the process for contractor selection via Pre-Qualification Questionnaire (PQQ).
- Oversee the mechanical and electrical statutory compliance contract, Catering and Cleaning contracts.
- Gather data, record, monitor and provide reports on the effectiveness of the health and safety systems to the People and Wellbeing Executive Group and CLF Board.

4.6 Employee Duties

Under the Health and Safety at Work etc. Act 1974 all employees have general health and safety responsibilities. Staff must be aware that they are obliged to take care of their own health and safety whilst at work along with that of others who may be affected by their actions.

All employees have responsibility to:

- Take reasonable care for the health and safety of themselves and others in undertaking their work.
- Always comply with the CLF and academy's health and safety Policy and procedures.
- Report all accidents, incidents and near miss incidents in line with the reporting procedure.
- Report all defects in condition of premises or equipment and any health and safety concerns immediately to their line manager using the defect reporting system EdOps
- Report immediately to their line manager any shortcomings in the academy's arrangements for health and safety.
- Co-operate with management/SLT on all matters relating to health and safety.
- Not to intentionally interfere with or misuse any equipment or fittings provided in the interests of health safety and welfare.
- Inform line manager if something happens that might affect their ability to work e.g., suffering an injury, taking prescribed medications that could affect them, penalty points on a driving license, pregnancy etc.
- Ensure that they only use equipment or machinery that they are competent / have been trained to use.
- Make use of all necessary control measures and personal protective equipment provided for safety or health reasons.

- Ensure that they are fully familiar with the emergency procedures in their area of work, e.g. accidents, first aid, fire, lockdown etc.

5 Trades Union Representative

Trades union representative will be encouraged by the academy to:

- Fulfil their duties.
- Attend any appropriate training.
- Consult regularly with the health and safety representatives on health and safety matters.
- Inspect the establishment in accordance with the agreed trade union procedures.

6 Competent Health and Safety Advice

The CLF will appoint a competent and suitably trained Head of Health and Safety to comply with the management regulations reg (7). The Head of Health and Safety will work in the Facilities and Estates Team.

7 Contracts

Solicitors:

Veale Wasbrough Vizards
Narrow Quay House
Narrow Quay
Bristol
BS1 4QA

Internal Auditors:
To be appointed.

External Auditors:
Bishop Fleming
16 Queen Square
Bristol
BS1 4NT

M&E (Mechanical & Electrical):

BAM FM
Millenium Gate,
Gifford Court,
Fox Den Rd,
Stoke Gifford
Bristol
BS34 811
Office - 0161 888 7988 Email – clfhelppdesk@bam.com
Contract Manager – Adam Darby



Asbestos:

Karen Williams
Facilities Manager

OR

Right way Environmental

1 Truebodies Yard

121 London Road

Warmley

Bristol

BS30 5NA

0117 403 1620

Fire Risk Assessments:

Neil Galling – Kelosape

35 Harleys Field

Gloucester

GL4 4RN